

# drive doors

The passion to drive doors

★★★★★  
**TORMAX**  
AUTOMATIC



# intelligent

*They open quickly and safely. They anticipate the approach of users and perform innumerable customised functions. TORMAX door systems operate exactly as you wish.*



# Passion in Motion

Modern man is never still. He wants to reach his destination quickly, safely and directly. Without delays and other problems. The whole world is therefore experiencing an increasing demand for automatic doors. And you will increasingly find TORMAX behind these doors.

**Convenient living.** We manufacture our automatic door systems with passion – doors that open and close with reliability. Silent, powerful and safe. This is how we open the door to a more comfortable life for hundreds of thousands of people. Step into the fascinating world of automatic doors. Learn about our versatile door systems which can be fine-tuned to meet your exact needs.



Intelligent



Modular



Ecological



Reliable



Economical

**Setting standards in door automation.** TORMAX has been using its impressive know-how for almost 60 years now to set standards in door automation. We were the very first company to develop automatic door drives in Europe and we installed Europe's first electro-hydraulic drive in Davos, Switzerland.

**With innovation into the future.** Our latest development is also setting standards for the whole sector. We are offering a new generation of intelligent door drives in the form of iMotion – a drive which is based on a concise arrangement of sophisticated, modular components. iMotion meets all the requirements placed on modern, networked and automated door automation.

iMotion represents yet another contribution from TORMAX towards the task of making the work of architects and planners and the life of operators and users easier.

iMotion®  
the passion to drive doors



# modular

*Customised to users' requirements,  
local standards and architecture.  
Prepared for the future.  
TORMAX door systems adapt to everything.*



# Everything you Require

TORMAX builds its automatic door systems in cooperation with selected partners. The heart of the system is always the drive – which allows every type of door to be automated in such a uniform way that people and goods can always reach their destination quickly and without obstruction.

**Doors made to measure.** You will always find the right system for you in the TORMAX range. Entrance doors with exclusive designs for buildings which are intended to impress. Doors which only open for authorised persons. Heavy fire doors which close tightly in an emergency. Doors for ultra-high traffic densities. And much, much more.



**Sliding door: the classic**



**Swing door: the practical**



**Revolving door: the elegant**



**Folding door: the space saver**

**Sliding door systems.** The classic of the automatic doors, flexible and convenient. Available in every conceivable material and tailored to suit the architecture and each exact use – from the standard sliding door to special models such as fire doors or escape route doors.

**Swing door systems.** The character of a normal door combined with the convenience of an automatic door. The design of the door knows no bounds – material and shape can be chosen at will – and manual swing doors can be easily automated.

**Revolving door systems.** They are the hub of buildings that are intended to impress, for example prestige offices, shopping centres, hotels or exhibition complexes. With their customised manufacture and modular construction they will blend in with almost any architectural style.

**Folding door systems.** They are used where space is limited. Even when door widths are restricted and corridors are narrow no-one needs to forego the convenience of an automatic door. And folding doors can also be easily installed in existing buildings.







# ecological

*Minimise energy losses from buildings.  
Reduce energy consumption in heating and ventilation.  
Use pollutant-free materials.  
TORMAX lives and breathes environmental protection.*



# Good for the Environment

Energy efficiency and automatic doors are not a contradiction in terms. On the contrary. Because TORMAX automatic door systems open so quickly and then close again quickly and tightly they minimise the exchange of air between the interior and the exterior, thus reducing the energy loss and the consumption of energy in the heating and ventilation systems. This is one of TORMAX's contributions to lessening man's impact on the environment.

**Sustainability in practice.** We attach great importance to sustainability in the ecological and economic assessment of our products as early as the design stage. We use pollutant-free materials during manufacture and employ environmentally friendly processes complying with the European Union's RoHS (Restriction of Hazardous Substances) Directive. This means that we avoid the use of environmentally harmful substances such as lead, mercury and hexavalent chrome.



**Closing: tightly sealed**



**Components: environmentally friendly**



**Energy loss: minimised**



**Quality means protection of the environment.** The superb quality of our drives and components also contributes to the sustainable use of resources. Components have to be replaced less frequently and the modular design enables individual components to be replaced. And when a product reaches the end of its working life, we dispose of it professionally and in an eco-friendly manner.

TORMAX always looks for the shortest possible transport route between the factory and the customer. Collaboration with selected partners on several continents allows us to manufacture as close as possible to the location where the door system will be installed. Yet another contribution to the lowest possible CO<sub>2</sub> emissions and to the protection of our environment.

This brochure is printed on FSC paper:





# reliable

*Extensive tough tests. Unequivocal personal protection. TORMAX door systems stand for the highest standards of functionality, safety, security and reliability.*



# Swiss Quality Standards

TORMAX door drives are manufactured in line with the strict standards of our parent company – standards which include the choice of components, the purchase of materials and extend even to the extensive tests on each individual product. A superb guarantee of quality and safety.

**Obligatory testing.** Every new design has to undergo a wide range of tests. It is not released for volume production until everything is operating perfectly. And we also subject every single drive, without exception, to extensive functional tests before it is allowed to leave our factory. Our TORMAX partners are certified by us and manufacture TORMAX door systems professionally and exactly to suit your requirements.



**Tough tests: relentless**



**Personal protection: all-embracing**



**Safety/security: uncompromising**



**Reliability: legendary**

**Uncompromising safety and security.** When it comes to the safety and security of your automatic doors we are uncompromising. Absolute reliability and uncompromising personal safety take centre stage. The modern control systems of TORMAX door drives are perfectly designed for the integration of all types of safety equipment. Sensors, radar, access control, monitoring cameras, emergency switches and much more can all be connected.

**Equipped for every eventuality.** Power limitation, reversing systems that trigger at the slightest resistance as well as speed and sensitivity settings – all provide the user with optimal protection. In an emergency or in the event of a power failure continued operation of the doors is guaranteed by a battery; alternatively the doors can be released and operated manually. Automatic fire doors close and seal themselves if a fire breaks out and guarantee the highest degree of protection required by the relevant standards.

All TORMAX drives comply with the national and international standards relevant to their application.



We are  
certified to  
ISO 9001.



UL325



UL325



DIN 18650



EU Directives:  
2006/95/EG  
2004/108/EG  
98/37/EG and  
2006/42/EG

A photograph of a modern office interior. In the foreground, a woman with blonde hair, wearing a white shirt and dark trousers, is walking from left to right, carrying a red folder. The office has a curved ceiling with a grid of small circular lights. In the background, there is a glass-walled office space with wooden paneling on the walls. Inside the glass office, a person is sitting at a desk. The floor is a light-colored, speckled material. A large, semi-transparent red shape is overlaid on the bottom right of the image, containing the word 'economical' and some text.

# economical

*Increase the attractiveness of buildings for investors and tenants. A long working life that pays off. Low maintenance costs. TORMAX door systems are an investment not an expense.*



# Comprehensive Protection for Your Investments

TORMAX automatic doors pay for themselves in every respect. They are extremely robust and are distinguished by a long working life. And they are designed in such a way that they can be developed and customised to meet future requirements.

**Buildings are becoming more attractive.** Automatic doors facilitate the free flow of people and goods. This enhances the attractiveness of your buildings for investors and tenants alike. TORMAX offers an economic package of products and services – including on-time delivery and installation. The low operating and service costs also contribute to the protection of your investment.



**Attractiveness: enhanced**



**Future: prepared**



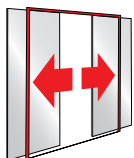
**Maintenance costs: minimal**

**Total solutions with a future.** With TORMAX systems you will always enjoy mature systems which have been through a sustained development process before being marketed – a process which guarantees excellent operational reliability, low maintenance costs and long-lasting, trouble-free operation. Maintenance intervals which are adjusted optimally to your requirements also extend the lifetimes of the systems.

**Guaranteed efficiency.** TORMAX guarantees the supply of spare parts for a period of ten years even after products have been discontinued. And if a repair should prove necessary in spite of our excellent quality, our finely meshed service network will quickly and efficiently resolve the problem. With TORMAX you are selecting the full service provider of automatic doors and are therefore reducing both the range of manufacturers and the service and maintenance costs to a minimum.

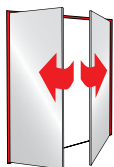
TORMAX is thinking not only about the present but is also preparing you for the future – with the new iMotion generation drives you are given the opportunity of modifying your door systems at any time to meet new requirements.

# TORMAX Opens Doors. Everywhere.



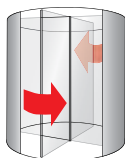
## Sliding doors

-  **1** Fire and smoke protection door
- 2** Linear sliding door
- 3** Telescope sliding door
-  **4** Corrosion-proof and water spray-resistant sliding door (IP65)
- 5** Angular sliding door
-  **6** Burglary-resistant sliding door (resistance classes 2 and 3)
- 7** Curved sliding door
-  **8** Sliding door for porches with linear sliding door and escape and rescue functionality
- 9** All-glass sliding door
-  **10** Door for escape and rescue routes



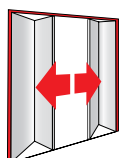
## Swing doors

-  **11** Fire and smoke protection door
-  **12** Swing door for barrier-free access (low energy)
- 13** Invisible drive solution (floor or ceiling installation)
-  **14** Door for escape and rescue routes
- 15** Swing door
-  **16** Hermetic swing door
-  **17** Radiation protection door



## Revolving doors

- 18** Fully automated revolving door
- 19** Servo-automatic revolving door

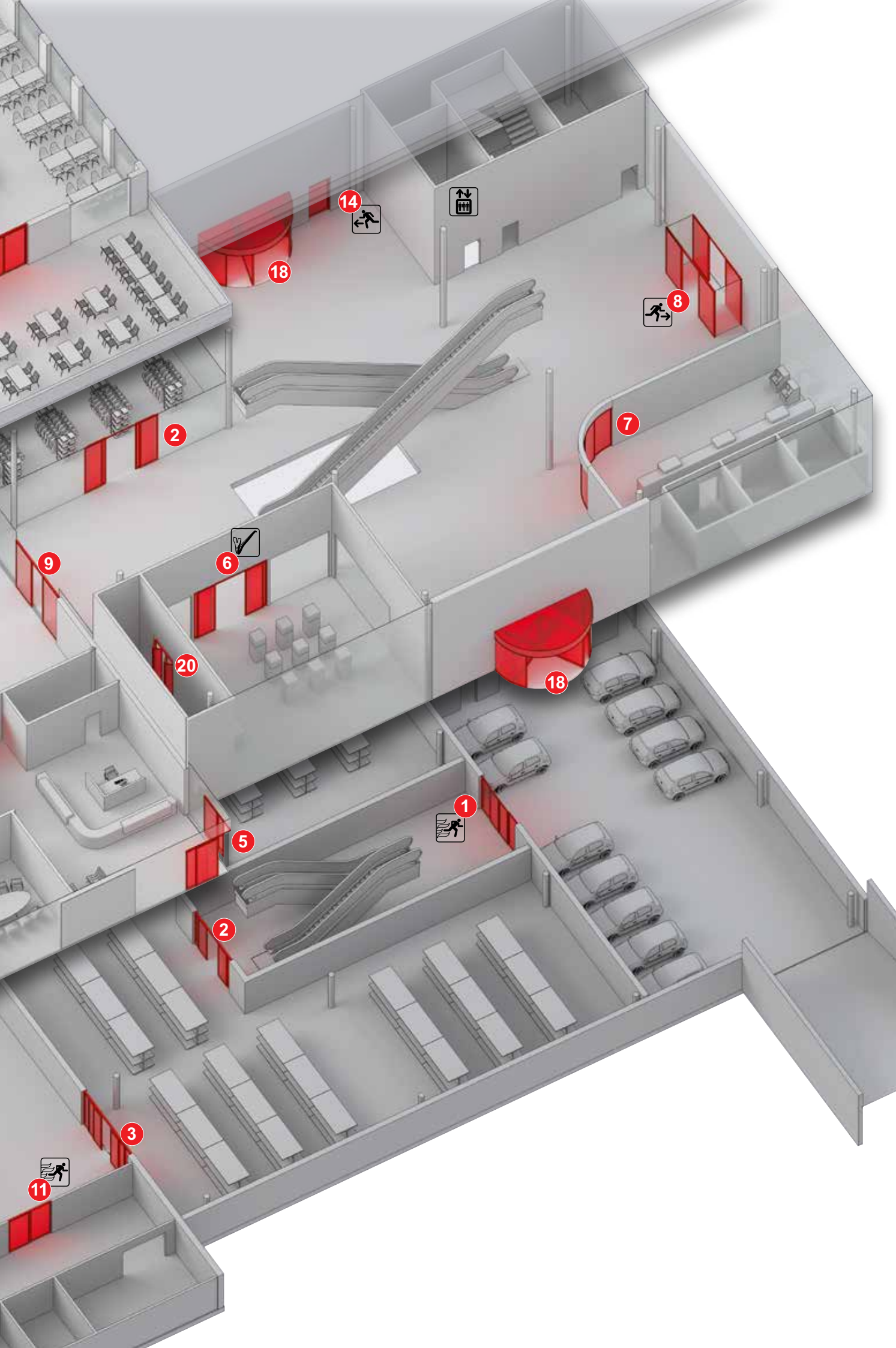


## Folding doors

- 20** Folding door







14



18

8



2

7

9

6



20

18

1



5

2

3

11



# Swiss Quality Everywhere in the World

TORMAX is a division of Landert Motoren AG. In 1951, the first year of its existence, the company installed the first electrohydraulic door drive (at that time a very recent invention) in Switzerland. The head office of this long-standing family-owned company is in Bülach, close to Zürich, Switzerland.

**Legendary quality.** TORMAX offers the full spectrum of automatic doors: sliding doors, swing doors, revolving doors and folding doors. The heart of the system is always the drive; these are developed in Switzerland. This is how we are able to offer our unequivocal guarantee of the legendary TORMAX quality, rapid reaction times and all-embracing quality assurance.

**Global and local.** TORMAX is active around the world. Subsidiaries in twelve countries and a global network of certified sales partners provide unfailing customer service. Thoughtful, in-depth advice guarantees that every TORMAX automatic door system is designed and installed to meet your requirements.

Which door may we open for you? We look forward to working with you to develop your individual door systems.